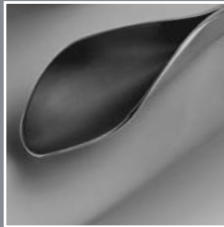


☰ hot&cold

# Opera



**Opera** is the H&C model that completes the Necta range dedicated to medium and large locations. **Opera** offers enhanced performances to ensure top quality drinks with every cup and an elegant design that complements each environment it is in. With its innovative Z4000 espresso and double espresso technology, **Opera** is bound to become the point of reference on its market segment for the years to come.

## DESIGN

- Refined and high tech design
- Double backlit front panel with an elegant balck and white aesthetics
- Chromium plated frame around selection area

## USER INTERFACE

- 20 direct selections
- Touch sensitive keypad with LED backlit buttons and labels
- Graphic display 128 x 64 pixel
- Metallic payment interface
- Optional delivery area lighting
- Vandal proof coin introduction available as option

## TECHNICAL INNOVATION

- Z4000 available in small and large version
- Double espresso version available
- New grinder with self setting regulation of blades as option
- New 0.5 L insulated stainless steel boiler

## ELECTRONICS

- Advanced 16 bit electronics with flash memory
- Master/slave connection with other Necta's S&F models
- Possibility to create or modify set-up through GIGA

## CAPACITY

|                                 |                     |
|---------------------------------|---------------------|
| CUPS                            | 620                 |
| STIRRERS                        | 550                 |
| COFFEE BEANS CANISTER CAPACITY  | 3.2 KG              |
| SOLUBLE CANISTER CAPACITY       | 2.5 L - 4.5 L - 6 L |
| STAINLESS STEEL ESPRESSO BOILER | 0.5 L               |

## FEATURES

|                      |                |
|----------------------|----------------|
| HEIGHT               | 1830 MM        |
| WIDTH                | 600 MM         |
| DEPTH                | 740 MM         |
| DEPTH WITH OPEN DOOR | 1250 MM        |
| WEIGHT               | 125 KG APPROX. |
| POWER SUPPLY         | 230 V          |
| FREQUENCY            | 50 Hz          |
| INSTALLED POWER      | 1850 W         |

## ENERGY CONSUMPTION

|                                |          |
|--------------------------------|----------|
| TO REACH OPERATING TEMPERATURE | 36,87 WH |
| FOR EACH HOUR OF STAND-BY      | 1320 WH  |

## CONFIGURATIONS

|                               | ESPRESSO | DOUBLE ESPRESSO |
|-------------------------------|----------|-----------------|
| SUGAR +                       | ☐        | ☐               |
| SUGAR -                       | ☐        | ☐               |
| NO CUP                        | •        | •               |
| ESPRESSO                      | ☐        | ☐☐              |
| BLACK COFFEE                  | ☐        | ☐☐              |
| MACCHIATO                     | ☐        | ☐☐              |
| CAPPUCCINO                    | ☐        | ☐☐              |
| CAPPUCCINO WITH CHOCOLATE     | ☐        | ☐               |
| DECAFFEINATED COFFEE          | ☐        | ☐               |
| DECAFFEINATED MACCHIATO       | ☐        | ☐               |
| DECAFFEINATED CAPPUCCINO      | ☐        | ☐               |
| DECAF. CAPP. WITH CHOCOLATE   | ☐        | •               |
| BARLEY COFFEE                 | ☐        | ☐               |
| BARLEY CAPPUCCINO             | •        | •               |
| MACCHIATO BARLEY COFFEE       | ☐        | ☐               |
| GINSENG COFFEE                | ☐        | •               |
| MACCHIATO WITH GINSENG COFFEE | ☐        | •               |
| CHOCOLATE                     | ☐        | ☐               |
| MILK CHOCOLATE                | ☐        | •               |
| LEMON TEA                     | ☐        | ☐               |
| MILK                          | ☐        | •               |
| MILK AND COFFEE               | ☐        | •               |
| GINSENG CAPPUCCINO            | •        | •               |
| TEA                           | •        | •               |
| TEA WITH MILK                 | •        | •               |
| STRONG CHOCOLATE              | •        | •               |
| HOT WATER                     | •        | •               |
| CUP ONLY                      | •        | •               |

• available as alternative to standard preselections/selections.

☐ second type of coffee in beans available.



ISO 14001 : 2004



ISO 9001:2008



NECTA IS A BRAND OF



Via Roma, 24  
Valbrembo (BG)  
Tel. 035 606111  
Fax 035 606464

www.nwglobalvending.it